



## DIGITAL SIGNAGE Wall-Mount

49" Android OS

49LS3000W

## New Media

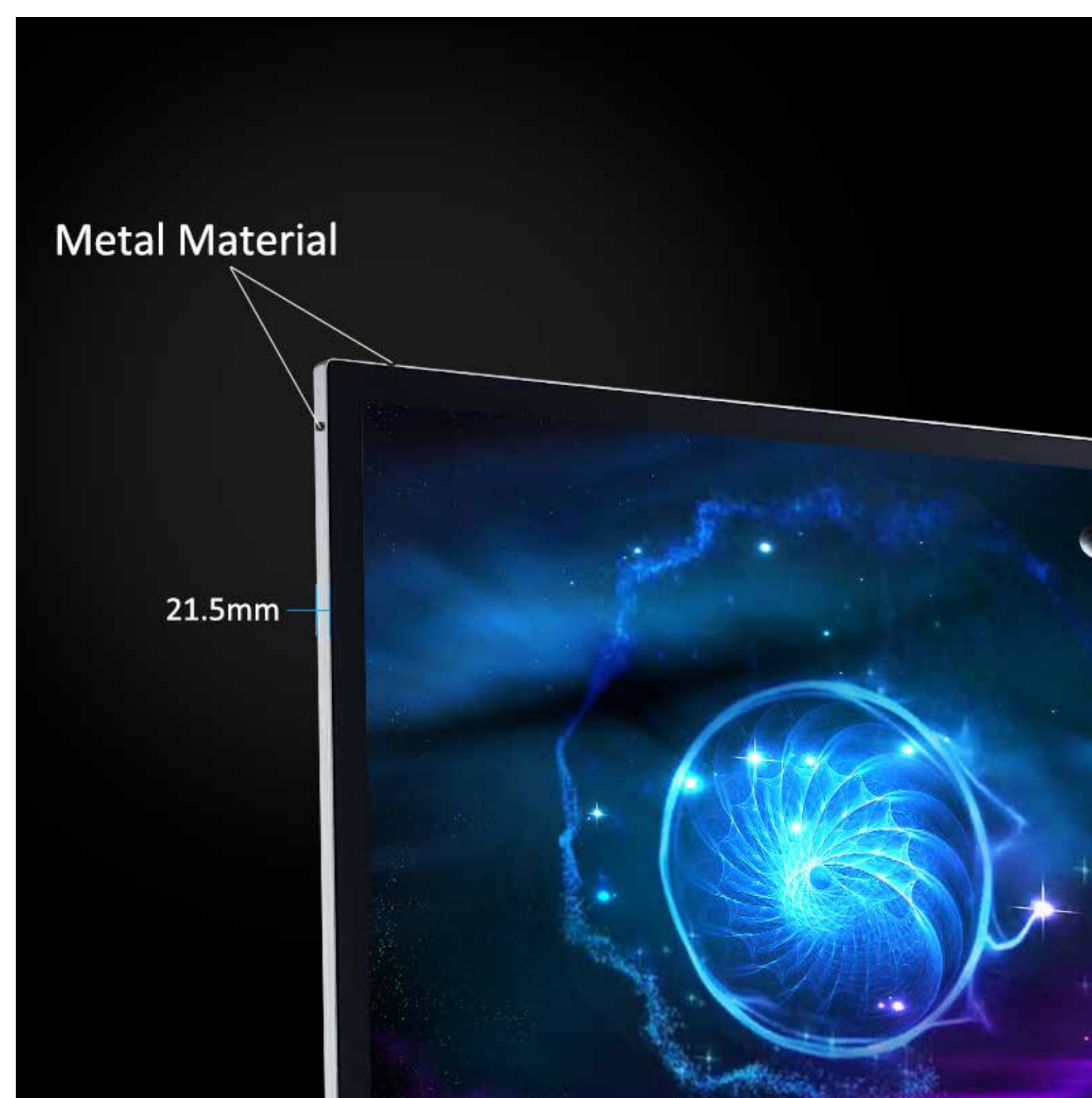
Bring innovation to life, powered by Android.

Amaze your customers with a smarter, faster, signage display. With integrated WiFi and designed for running Android apps, it's the next evolution in signage solutions.

## Product Appearance



Tempered Glass



Slim Bezel Design



Multiple Connectors



1

**Full HD Picture Quality**

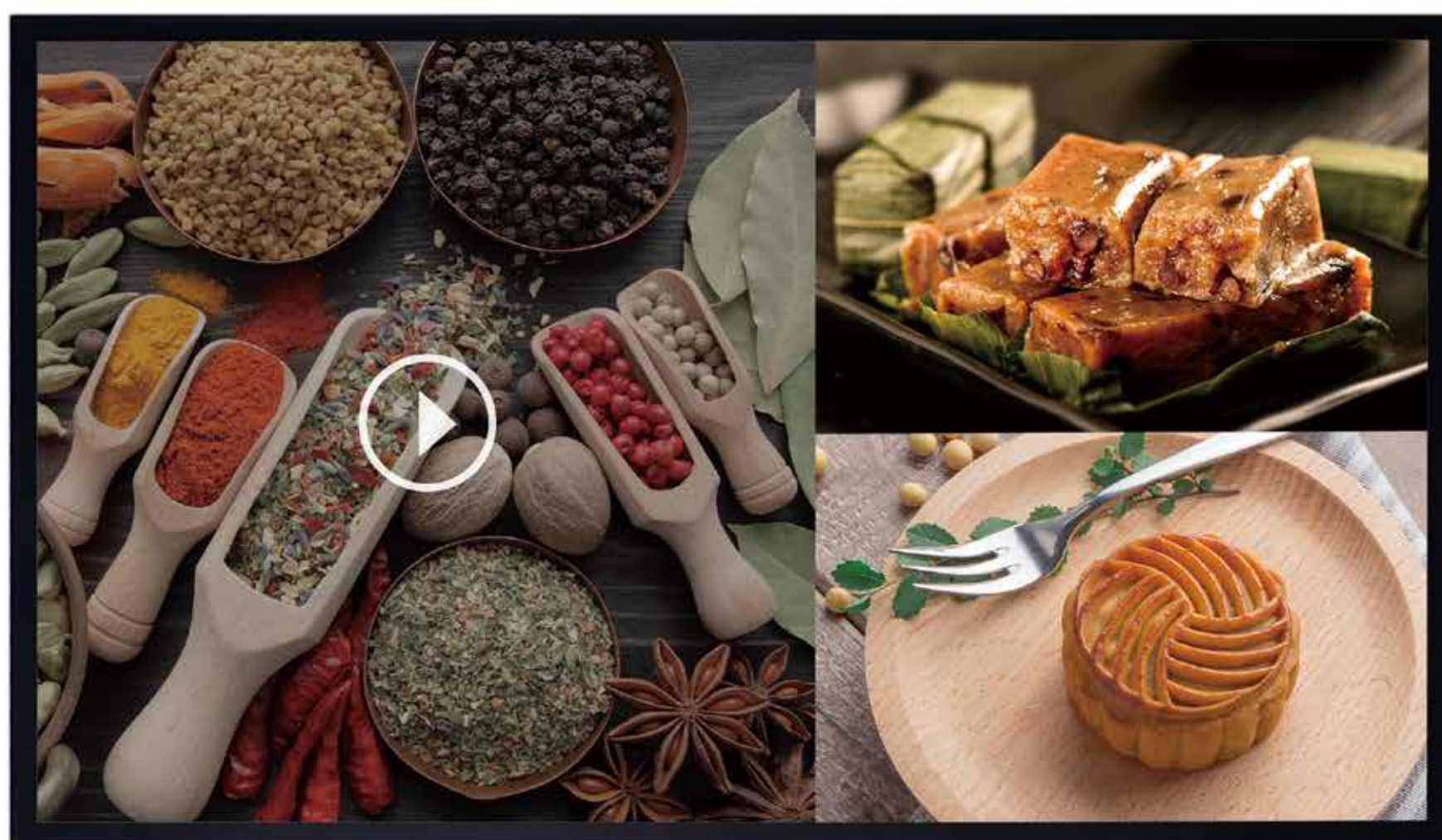
Excellent Display with 1080P Full HD Picture Quality. Create an immersive experience with a LCD panel size of 1920 x 1080 resolution and 16.7M Display Colour.

3

**Time Switch & Built for 24/7 Use**

Easily choose the "Week mode" or "Daily mode" and set the switch on & off at any time to control the advertising message. Strong durable support to present your business messaging 24/7.

5

**Smart Split Screen**

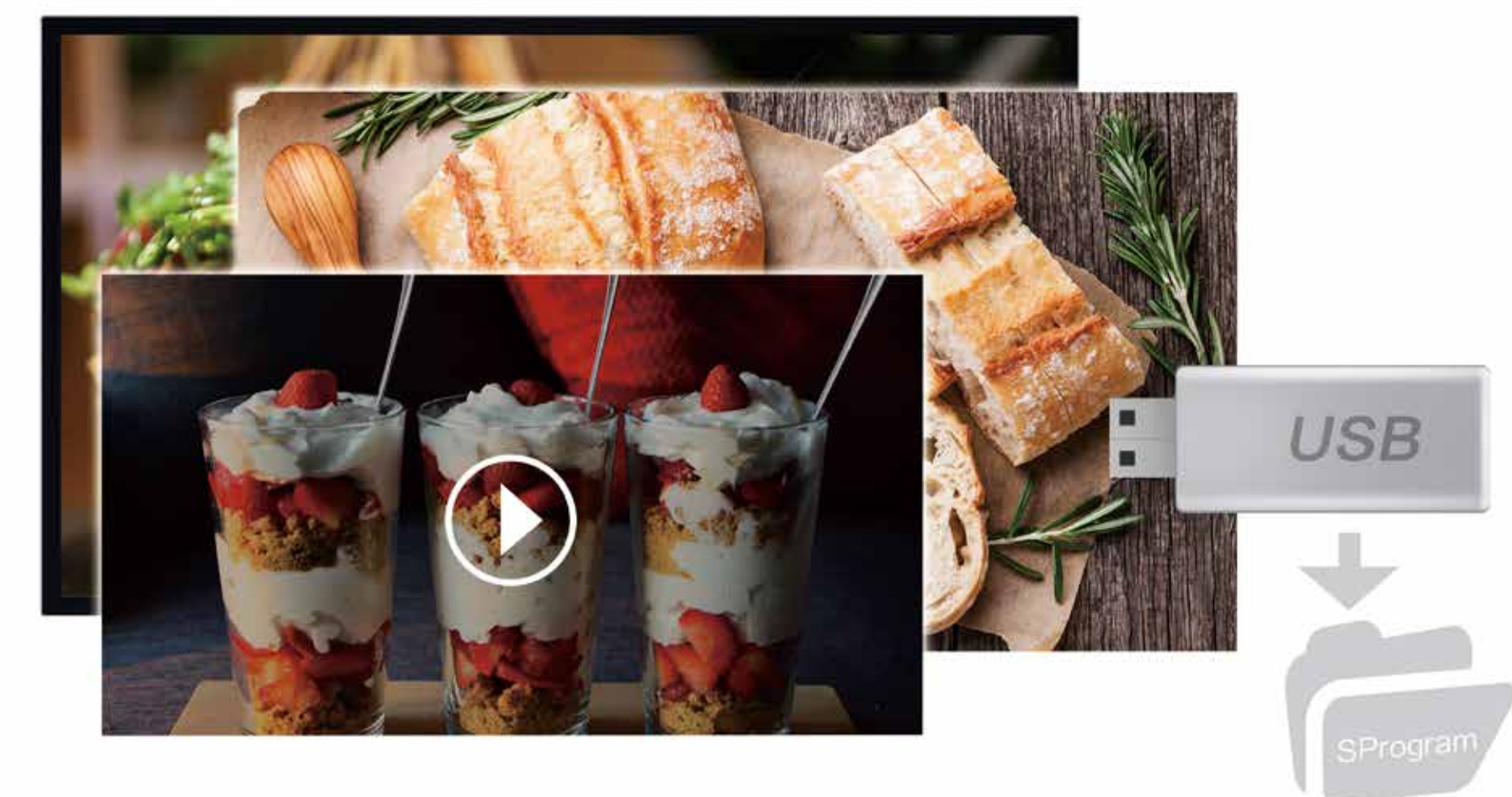
Select Multi-template to easily display Full-Screen picture play, Two\Three\Four Split-screen picture play and Picture & Video mixed arrangement. Simple One-key Split Picture and Video operation. (All play content is copied to the local SProgram folder.)

2

**Horizontal and Vertical Display Orientation**

Simply choose your preferred Horizontal or Vertical display orientation.

4

**USB Smart Clone**

Create a new folder on the flash disk named SProgram. Put the messaging files (videos, pictures) into the SProgram folder. Plug the flash disk into the USB port on the signage unit and the messaging will be cloned automatically.

Only takes 50 seconds to clone a 400 Megabyte file.



### Display

- Diagonal Screen size: 49 inch
- Panel Resolution: 1920\*1080
- Optimum Resolution: 1920\*1080@60Hz
- Brightness: 350 cd/m<sup>2</sup>
- Contrast Ratio (Typical): 1000:1
- Aspect Ratio: 16:9
- Response Time (Typical): 12ms
- Display Colours: 16.7 million
- Viewing Angle (H / V): 178/178 degree

### Internal Player

- CPU: Dual Core A53
- GPU: ARM Mali400 Quad Core 533 MHz
- Dominant Frequency: 1.2GHz
- Memory: 1 GB DDR3
- Storage: 8 GB EMMC
- Operation System:Android 4.4.2

### Connectivity

- USB2.0\*1
- USB3.0\*1
- Earphone\*1
- LAN\*1
- TF Cassette \*1
- HDMI 2.0\*1
- Built-in WiFi

### Sound

- Built-in Speakers: 2\*4 W RMS

### Power

- Standby Power Consumption: <1 W
- Mains Power: 100 ~ 240VAC, 50 ~ 60Hz
- Rated Power Consumption:100W
- MTBF: 30,000 hour(s)

### Miscellaneous

- On-Screen Display Languages: English, Simplified Chinese, Traditional Chinese
- Regulatory Approvals: CCC, CB

### Multimedia Applications

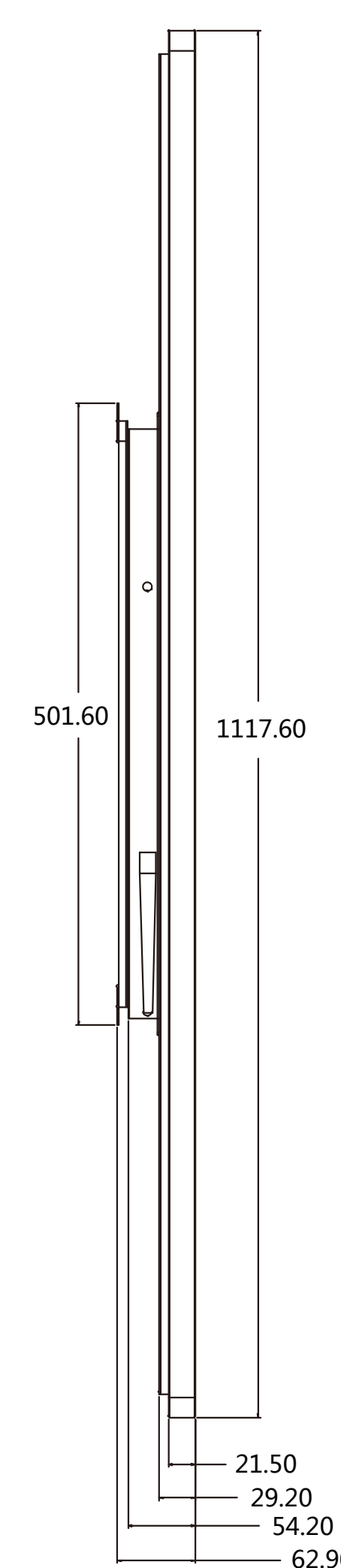
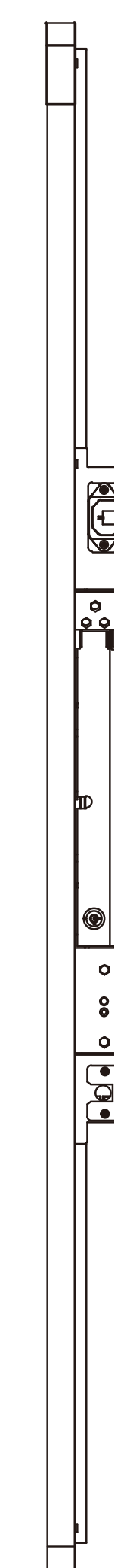
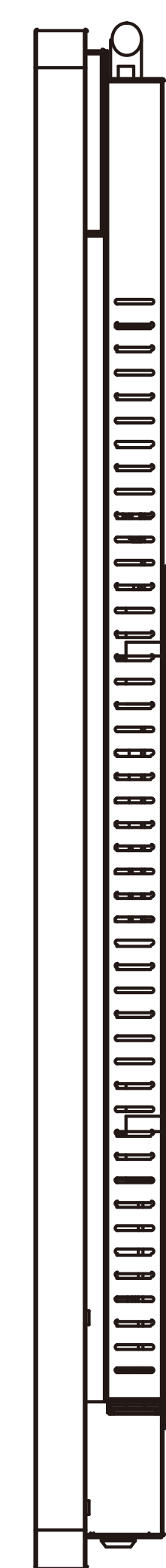
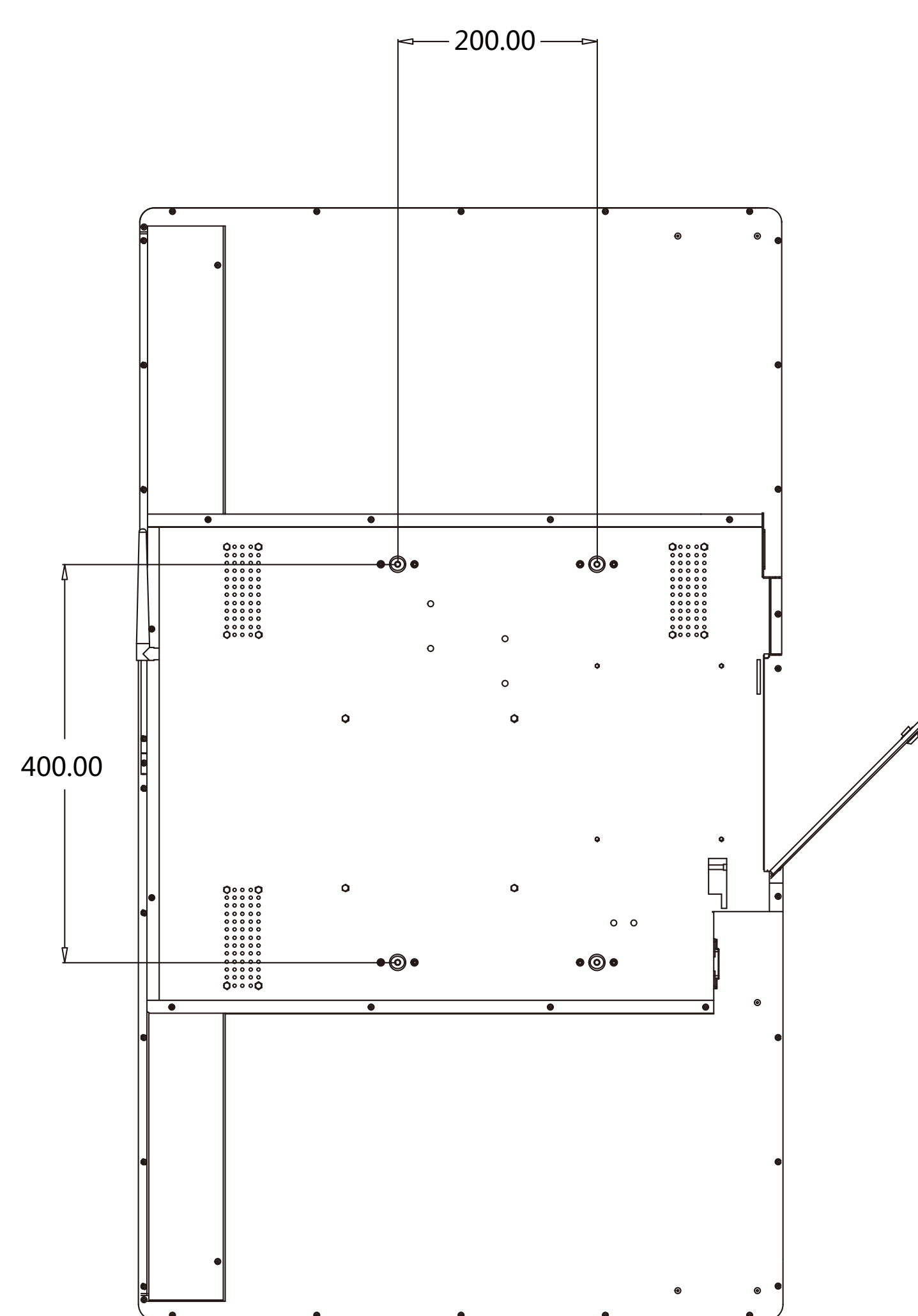
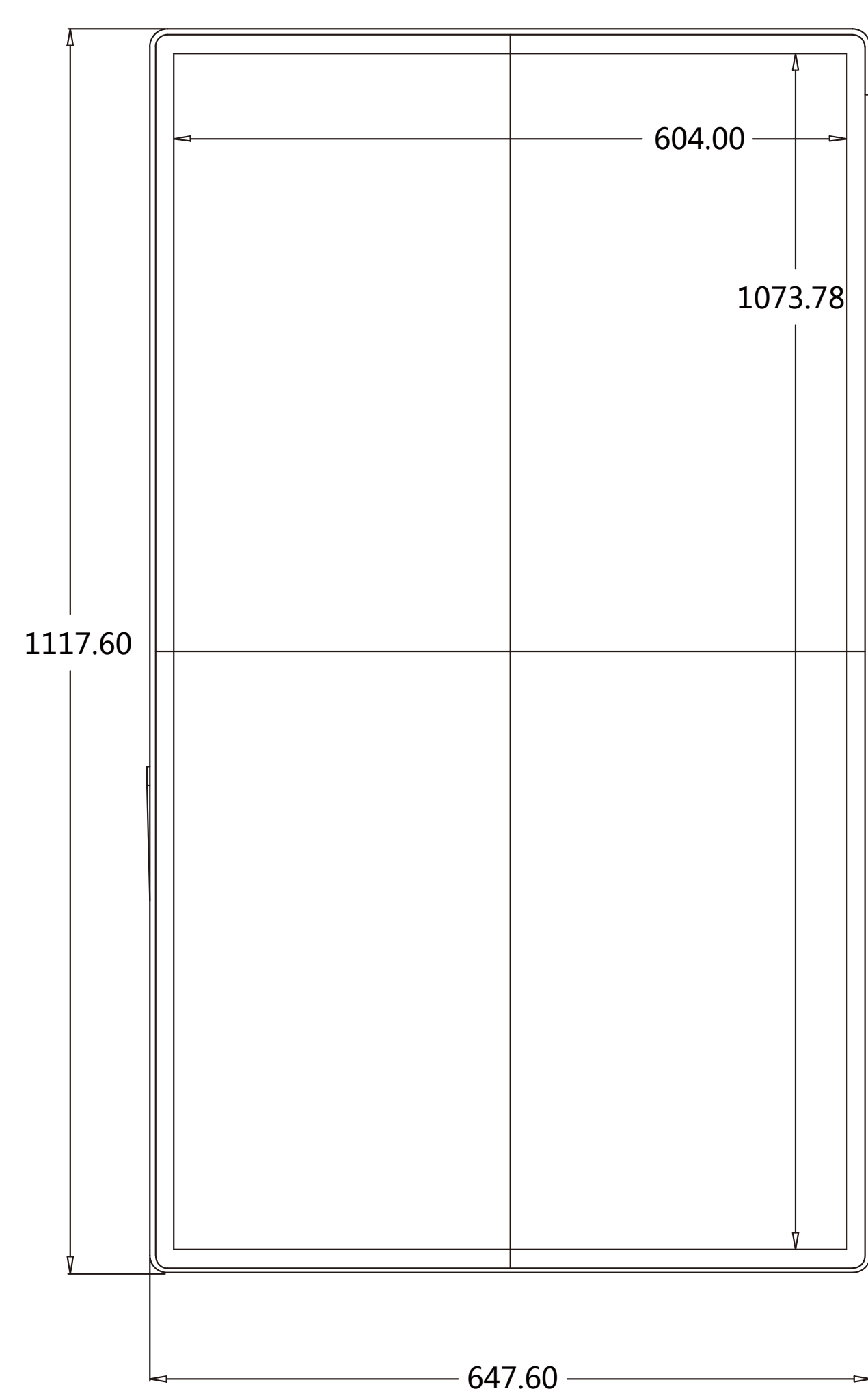
- USB Playback Audio: AAC, M4A, MP3,WAV, WMA
- USB Playback Picture: BMP, GIF, JPEG
- USB Playback Video: M2TS, M4V, MKV, MP4, MPEG, MPG, MTS, TS, VOB, WMV

### Dimensions

- CBU Size(L\*H\*D): 1117.6\*647.6\*54+8.5mm
- Package Dimension (L\*H\*D): 1230\*155\*755mm
- Gross Weight: 32.3Kg (Without Wall-mount) 33.5Kg (With Wall-mount)
- Net Weight: 26.5Kg(Without Wall-mount) 27.7Kg(With Wall-mount)

### Accessories

- LED Digital Signage:1 pcs
- User Manual: 1 pcs
- Users Warranty Card: 1 pcs
- Remote Control: 1 pcs
- Base Bracket: 1 pcs
- Battery: 2 pcs



## Digital Signage Wall-Mount

For more information about CHiQ Digital Signage Display ,visit

[www.CHiQ.com.au](http://www.CHiQ.com.au)

CHiQ is created by one of China's leading designers and manufacturers of consumer electronics and home appliances, the new generation of CHiQ consumer electronics and electrical home appliances are manufactured by Changhong group.

Copyright C 2018 CHANGHONG ELECTRONICS(AUSTRALIA) PTY. LTD.All rights reserved.All brand,product,service names and logos are trademarks and registered trademark of their respective owners and are hereby recognized and acknowledge

CHANGHONG ELECTRONICS(AUSTRALIA) PTY. LTD.

Add: 2/251 ferntree Gully Rd,Mt Waverley,VIC,3149

E-mail:Service@changhong.com.au

# CHiQ